

BACK TO BLOGS

memcached 1.4.4 Windows 32-bit binary now available!

Patrick Galbraith • Published December 8, 2009

ABOUT THE AUTHOR

Patrick Galbraith

I'm pleased to announce that memcached 1.4.4 for Windows 32-bit is now available on labs.northscale.com at <http://downloads.northscale.com/memcached-win32-1.4.4-14.zip>! This is the latest release for Windows, including the hooks for running memcached as a service. Please see the INSTALL file for installation instructions. Enjoy!

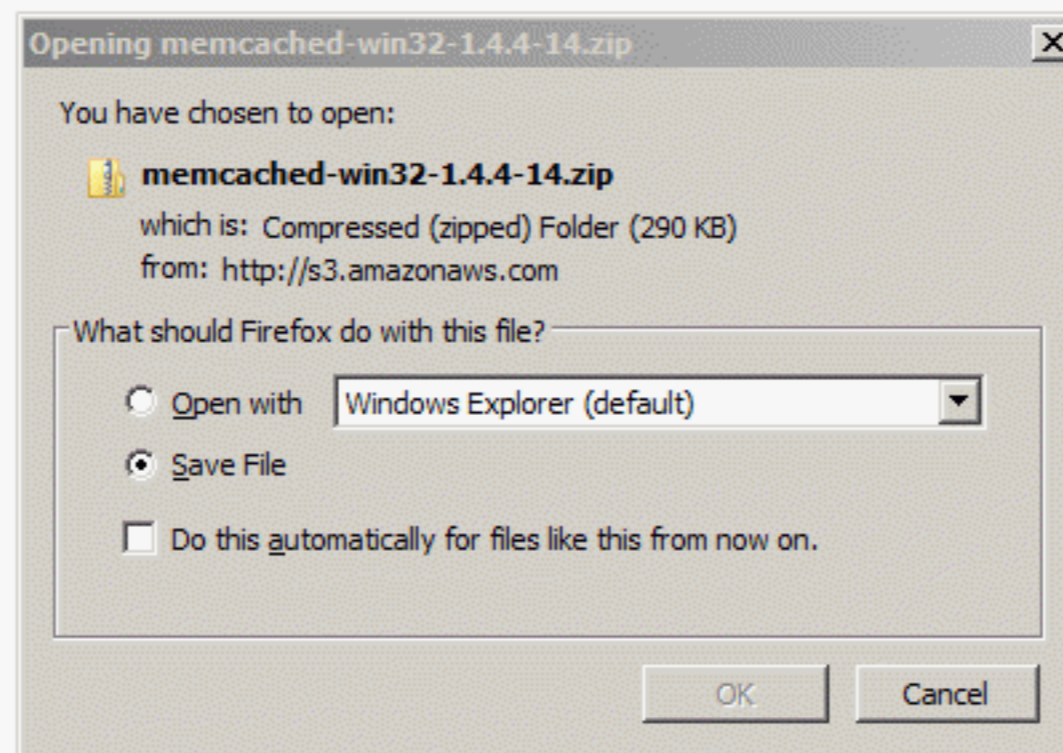
FILTER BLOGS BY:

TOPIC

- .NET (21)
- Application Design (15)
- Best Practices and Tutorials (34)
- Couchbase Architecture (7)
- Couchbase Mobile (79)
- Couchbase Server (98)
- Data Modeling (8)
- GoLang (2)
- Java (19)
- N1QL / Query (28)
- Node.js (11)
- Security (9)
- Spring (6)

DATE

- 2016 (202) +



Name	Date modified	Type
INSTALL	12/9/2009 1:43 AM	File
libgcc_s_sjlj-1.dll	6/4/2009 2:35 PM	Application extens...
memcached	12/9/2009 1:14 AM	Application
mingwm10.dll	1/10/2009 11:32 PM	Application extens...
pthreadGC2.dll	6/4/2009 2:35 PM	Application extens...
README	12/9/2009 1:44 AM	File

```

Administrator: Command Prompt
memcached 1.4.4-14-g9c660c0
p <num> TCP port number to listen on (default: 11211)
U <num> UDP port number to listen on (default: 11211, 0 is off)
s <file> UNIX socket path to listen on (disables network support)
a <mask> access mask for UNIX socket, in octal (default: 0700)
l <ip_addr> interface to listen on (default: INADDR_ANY, all addresses)
s <file> unix socket path to listen on (disables network support)
a <mask> access mask for unix socket, in octal (default 0700)
l <ip_addr> interface to listen on, default is INADDR_ANY
d start tell memcached to start
d restart tell running memcached to do a graceful restart
d stop shutdown tell running memcached to shutdown
d install install memcached service
d uninstall uninstall memcached service
r maximize core file limit
u <username> assume identity of <username> (only when run as root)
m <num> max memory to use for items in megabytes (default: 64 MB)
M return error on memory exhausted (rather than removing items)
c <num> max simultaneous connections (default: 1024)
k lock down all paged memory. Note that there is a limit on how much memory you may lock. Trying to allocate more than that would fail, so be sure you set the limit correctly for the user you started the daemon with (not for -u <username> user; under sh this is done with 'ulimit -S -l NUM_KB').
v verbose (print errors/warnings while in event loop)
vv very verbose (also print client commands/responses)
vvv extremely verbose (also print internal state transitions)
h print this help and exit
i print memcached and libevent license
P <file> save PID in <file>, only used with -d option
f <factor> chunk size growth factor (default: 1.25)
n <bytes> minimum space allocated for key+value+flags (default: 48)
L Try to use large memory pages (if available). Increasing the memory page size could reduce the number of TLB misses and improve the performance. In order to get large pages from the OS, memcached will allocate the total item-cache in one large chunk.
D <char> Use <char> as the delimiter between key prefixes and IDs. This is used for per-prefix stats reporting. The default is ":" (colon). If this option is specified, stats collection is turned on automatically; if not, then it may be turned on by sending the "stats detail on" command to the server.
t <num> number of threads to use (default: 4)
R Maximum number of requests per event, limits the number of requests process for a given connection to prevent starvation (default: 20)
C Disable use of CAS
b Set the backlog queue limit (default: 1024)
B Binding protocol - one of ascii, binary, or auto (default)
I Override the size of each slab page. Adjusts max item size (default: 1mb, min: 1k, max: 128m)

C:\Users\Administrator\Downloads>C:\Users\Administrator\Downloads\memcached.exe
-uninstall
^C
  
```

Services

File Action View Help

Services (Local)

memcached

[Stop](#) the service
[Restart](#) the service

Description:
memcached 1.4.4-14-g9c660c0 is a high-performance, distributed memory object caching system, generic in nature, but intended for use in speeding up dynamic web applications by alleviating database load. Win32 port by Kronuz.

Name	Description	Status	Start
KtmRm for Distributed Tran...	Coordinates...		Man...
Link-Layer Topology Discov...	Creates a N...		Man...
Local Session Manager	Core Windo...	Running	Auto...
memcached	memcache...	Running	Auto...
Microsoft FTP Service	Enables this...	Running	Auto...
Microsoft iSCSI Initiator Ser...	Manages In...		Man...
Microsoft Software Shadow...	Manages so...		Man...
Microsoft Storage Spaces S...	Host service...		Man...
Mozilla Maintenance Service	The Mozilla ...		Man...
Multimedia Class Scheduler	Enables rela...		Man...
Net.Pipe Listener Adapter	Receives act...	Running	Auto...
Net.Tcp Listener Adapter	Receives act...	Running	Auto...
Net.Tcp Port Sharing Service	Provides abi...	Running	Auto...
Netlogon	Maintains a ...		Man...
Network Access Protection ...	The Networ...		Man...
Network Connections	Manages o...	Running	Man...
Network Connectivity Assis...	Provides Dir...		Man...
Network List Service	Identifies th...	Running	Man...
Network Location Awareness	Collects an...	Running	Auto...
Network Store Interface Ser...	This service ...	Running	Auto...
Optimize drives	Helps the c...		Man...

Extended Standard